



CollectiveMark

SAFETY PUBLICATION CATALOGUE

2024/2025

SAFETY PUBLICATION CATALOGUE

Introduction

The UK plant hire industry is the best established and most professional in the world, and the Construction Plant-hire Association (CPA) is the leading organisation for plant hire in the UK. CPA is a trade association, run by its Members, for the benefit of the industry.

Established for over 80 years, the Association has circa 1,900 members throughout Great Britain. CPA has an unrivalled understanding of safety issues with operated and non-operated plant. Guidance and other technical publications from the CPA will help all duty holders with all aspects of plant safety and operator competence issues.

CPA guidance covers the essential health, safety and legal requirements for plant-based operations, with endorsements from the HSE and Industry. Many of the guides have been written in conjunction with principal contractors, specialist contractors, training organisations, employee organisations and safety specialists, as well as the HSE. Guidance and Technical Information Notes are available to download free of charge from www.cpa.uk.net.

Since 2009, CPA has also led the Construction Industry's Plant Safety Group, drawing together expertise from all parts of the supply chain in construction, and tackling specific issues concerning the safe operation, installation and use of construction plant.

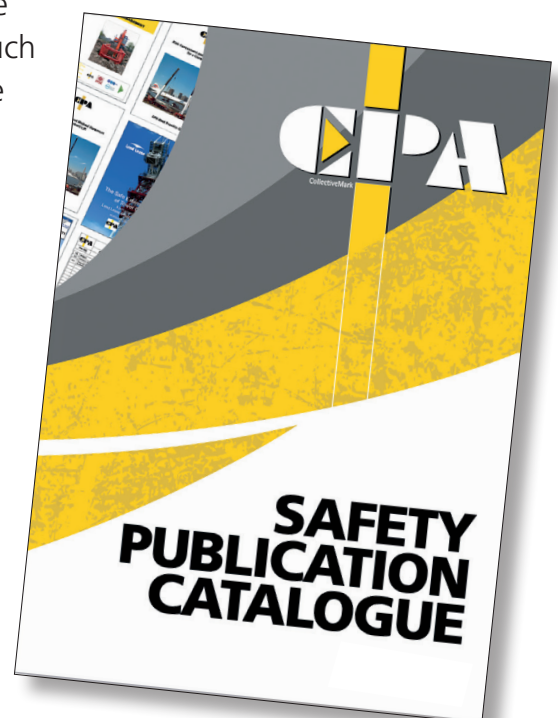
CPA acknowledges the contributions of all the companies and individuals who have helped in the development of the CPA guidance documents. In particular, thanks go to all those companies and individuals that have offered direct support and have contributed time and expertise to the projects. Nearly all of the publications in this catalogue were written and edited by Tim Watson, CPA's Technical Consultant who passed away in April 2020 following illness. The quantity and quality of the publications are testament to his unrivalled technical knowledge and writing abilities which supports his continual dedication to the promotion of safety for the industry.

CPA guidance is provided to help the duty holder with the discharge of their duties under UK health and safety law. It does not relieve the duty holder of the requirement to identify and take such steps as are necessary to fulfil their duties. Please note that whilst every care has been taken to ensure the accuracy of the material contained within

CPA guidance documents, no liability is accepted by the Construction Plant-hire Association in respect of the information given. No material from this booklet or any CPA publication may be reproduced in any shape or form without the permission of the Construction Plant-hire Association.

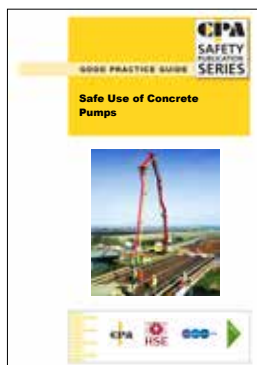
Peter Brown

Technical and Development Manager, CPA



Section 1. Guidance	2
British Concrete Pumping Group	2
Safe Use of Concrete Pumps	2
Construction Hoist Interest Group	2
Safe Use of Transport Platforms	2
Transporting Scaffolding in Construction Hoists	2
Work at Height on Construction Hoists	2
Maintenance, Inspection and Thorough Examination of Construction Hoists	3
Guidance on Tying Construction Hoists and Mast Climbing Work Platforms to Supporting Structures	3
Construction Hoist Technical Information Notes	3
Crane Interest Group	4
Tendering, Management and Operations of Mobile Cranes	4
Requirements for Mobile Cranes Alongside Railways Controlled by Network Rail	4
Crane Hire and Contract Lift	4
Risk Assessment and Method Statement for a Contract Lift	4
Maintenance, Inspection, and Thorough Examination of Mobile Cranes	5
Work at Height on Mobile Cranes	5
Safe Use of Lorry Loaders	5
Maintaining Roadworthiness of Mobile Cranes	5
Mobile Crane Technical Information Notes	6
Shoring Technology Interest Group	6
Management of Shoring in Excavation. Part 1 - Management	6
Management of Shoring in Excavation. Part 2 - Hazard Identification for Risk Assessment	6
Management of Shoring in Excavation. Part 3 - Selection of Proprietary Shoring Equipment.	6
Safety in Shoring.	7
Shoring Technology Technical Information Notes	7
Tower Crane Interest Group	7
Tendering, Management and Operations of Tower Cranes	7
Requirements for Tower Cranes Alongside Railways Controlled by Network Rail	7
Safe Use of Self Erecting Tower Cranes	8
Safe Use of Top Slew Tower Cranes	8
Maintenance, Inspection and Thorough Examination of Tower Cranes	8
Climbing of Tower Cranes	8
Tower Crane Climbing Safety (Film)	9
Safe Use Guidance on Emergency Action Planning and Rescue From Height on Tower Cranes	9
Tower Crane Technical Information Notes	9
Suction and Vacuum Excavator Interest Group	9
Safe Use of Suction/Vacuum Excavators	9
Section 2. Construction Industry Plant Safety Group Guidance	10
Reducing Unintended Movement of Plant	10
Safe Use of Quick Hitches on Excavators	10
Safe Use of Telehandlers in Construction	10
Safe Use of Dumpers	10
Telehandler Suspended Loads	11
Medical Fitness to Operate Construction Plant	11
Competence to Operate Construction Plant	11
Ground Conditions for Construction Plant	11
Ground Conditions for Construction Plant - A Brief Guide	12
Lifting Operations with Excavators	12
Rescue of Persons from MEWPs	12
Managing the Safe Condition of MEWPs	12
MEWP Safety Alert Protocol	13
Reducing Trapping/Crushing Injuries to People in MEWPs	13
Safe Use of Dumpers Supplement Rotating Seat Dumpers Protocol	13
Section 3. General Safety Guidance	14
Work at Height whilst Loading and Unloading Transport	14
Staying Safe When Operating Forward Tipping Dumpers	14
Hydraulic Pressurising Activities	14
DfT CoP Securing Loads on HGVs and Goods Vehicles	14

British Concrete Pumping Group



Safe Use of Concrete Pumps

This Code gives guidance for the safe use of lorry-mounted concrete pumps. Sections are also applicable to static concrete pumps, trailer-mounted concrete pumps and tower-mounted booms.

The Code recommends minimum standards for safe and efficient operations. It covers selection of concrete pumps, travelling to and from the site, the pumping operations, cleaning out the pump, inspection, thorough examination and maintenance.

Note: Being updated 2024.

Quote Ref: BCPG 001

Construction Hoist Interest Group

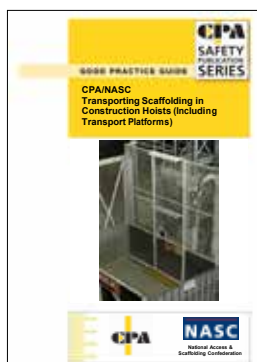


Safe Use of Transport Platforms

The purpose of this updated guidance is to help those involved with planning, installing and carrying out lifting operations using transport platforms to achieve a better awareness of the particular risks involved and the measures that can be put in place to mitigate those risks.

The sections on managing the processes of installation, use and dismantling have been expanded and up-dated, as have those covering selection of transport platforms, the detail of erection, alteration and dismantling, and the use of transport platforms. A new section on the selection and training of people has been added, together with additional information on maintenance, inspection and thorough examination.

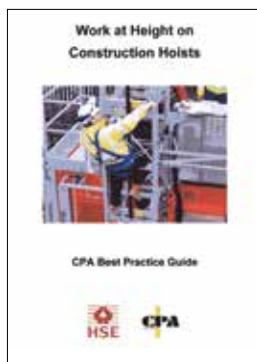
Quote Ref: CHIG 0201(1)



Transporting Scaffolding in Construction Hoists

This document provides guidance for scaffolders on the planning and safe use of construction hoists, including transport platforms, used for transporting scaffolding materials. The use of hoists for the transportation of scaffolding materials, during the erection or dismantling of a scaffold, can provide a safer means of lifting these materials than some traditional methods but as hoists used for this purpose may not have all the physical safeguards present, there is scope for unsafe use which has led to a number of serious accidents.

Quote Ref: CHIG 0501



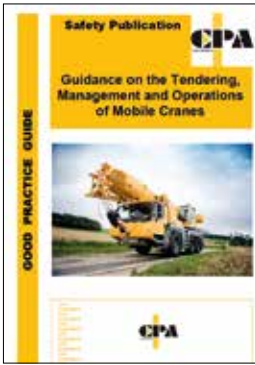
Work at Height on Construction Hoists

Where working at height is required as part of the erection, alteration, maintenance and dismantling of constructions hoists, this should be carried out by trained personnel, following careful planning which includes adequate assessment of the risks involved. This planning should include provision for the rescue of persons, both during erection, alteration and dismantling, and whilst the hoist is in-service.

This document provides guidance on the issues.

Quote Ref: CHIG 0901

Crane Interest Group



Tendering, Management and Operations of Mobile Cranes

This guide provides good practice advice on the expected standard of duties and responsibilities for both operators and crane users and also covers legal requirements and directs readers to further relevant guidance material. This guide aims to raise standards and encourage sourcing from responsible mobile crane suppliers.

Quote Ref: CIG 2308



Requirements for Mobile Cranes Alongside Railways Controlled by Network Rail

This guidance has been devised to provide guidance on the use of mobile cranes alongside the railway with input and consultation undertaken with Network Rail. The requirements outlined in the document should be adhered to in preventing a potential catastrophic incident and applies to temporarily installed lifting equipment. The guide does not introduce any additional requirements and is aimed at producing an easily accessible document endorsed by Network Rail. Note: being updated for 2024 in line with Network Rail's update on CIV0063.

Quote Ref: CPA 1801

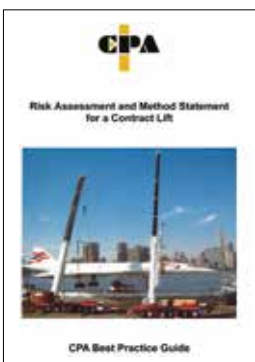


Crane Hire and Contract Lift

This guidance helps to establish before a contract is drawn up whether the customer or the crane hire company will provide the "appointed person".

It explains the differences between "crane hire" and "contract lifting" and the insurance needs in each set of circumstances.

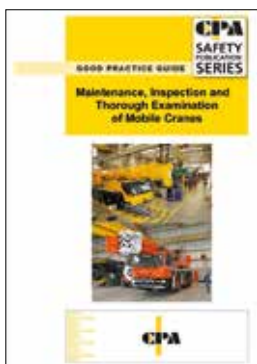
Quote Ref: CIG 9801(5)



Risk Assessment and Method Statement for a Contract Lift

This publication provides guidance for the Appointed Person on completing a lift plan for a contract lift. The publication is divided into four parts and contains guidance for safe planning and three template forms that can be completed by the AP which indicates the factors that need to be taken into account during the planning process. The forms include a sample risk assessment and method statement, a sample site plan form that shows the positioning of the crane and loads, and a sample form showing the crane access and capacity record for a crane hire. This document is in support of the CPA best practice publication - Crane Hire and Contract Lift.

Quote Ref: CIG 9801

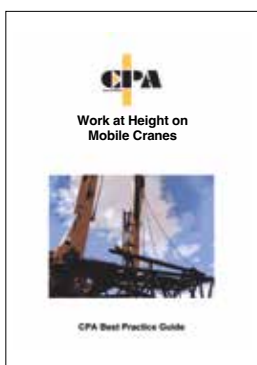


Maintenance, Inspection and Thorough Examination of Mobile Cranes

This guidance has been prepared to provide clarity about the practical elements of maintenance, inspection and thorough examination. The guidance is simple but comprehensive and easy to adopt. It represents best practice for mobile cranes used in the construction industry and is equally applicable to mobile crane use across all industry sectors. Contents include:

- The specific inclusion of heavy lift cranes;
- A new section on the inspection of the chassis of roadgoing mobile cranes;
- Requirements for the identification and recording of safety critical components;
- Guidance on the need for thorough examination of mobile cranes after rigging on site;
- Additional information on the preparation of defined scopes of periodic thorough examination and thorough examination following installation;
- Additional information has been included on ground assessment, medical fitness and protection against fumes.

Quote Ref: CIG 1001



Work at Height on Mobile Cranes

Where Working at Height is required as part of the rigging, use, maintenance and thorough examination of mobile cranes, it should be carried out following careful planning, including adequate assessment of the risks involved.

This document provides guidance on the issues.

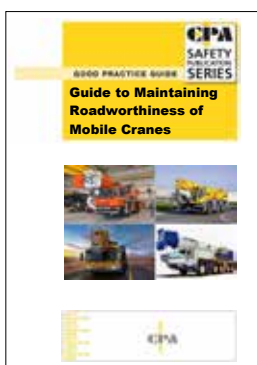
Quote Ref: CIG 0701



Safe Use of Lorry Loaders

This guidance has been prepared by the industry in conjunction with ALLMI and the HSE to provide clarity about the safe use of lorry loaders: including planning, role of personnel, training and familiarisation of personnel, siting, safe use, maintenance, inspection and thorough examination. The guidance is straightforward, comprehensive and easy to adopt.

Note: Being updated in 2024



Guide to Maintaining Roadworthiness of Mobile Cranes

This guide provides good practice advice on the duties and responsibilities that a crane owner or driver have to the roadworthiness of their vehicles. It covers what they are legally required to do, what is good practice and gives information on where to seek additional help, including technical assistance or training. This publication includes all types of mobile cranes.

Quote Ref: CIG 1901

CPA		Construction Plant with Attachment Safety Interest Group	
Mobile Crane (Wheeled & Crawler) Technical Information Note			
Index of Information Note Titles			
101	Index	10/1/10	2
102	Introduction	10/1/10	2
103	The Use of Mobile Cranes on Site	10/1/10	2
104	The Use of Mobile Cranes on Site	10/1/10	2
105	Mobile Crane Safety (Crawler)	10/1/10	2
106	Mobile Crane Safety (Wheeled)	10/1/10	2
107	Mobile Crane Safety (Wheeled)	10/1/10	2
108	Mobile Crane Safety (Wheeled)	10/1/10	2
109	Mobile Crane Safety (Wheeled)	10/1/10	2
110	Mobile Crane Safety (Wheeled)	10/1/10	2
111	Mobile Crane Safety (Wheeled)	10/1/10	2
112	Mobile Crane Safety (Wheeled)	10/1/10	2
113	Mobile Crane Safety (Wheeled)	10/1/10	2
114	Mobile Crane Safety (Wheeled)	10/1/10	2
115	Mobile Crane Safety (Wheeled)	10/1/10	2
116	Mobile Crane Safety (Wheeled)	10/1/10	2
117	Mobile Crane Safety (Wheeled)	10/1/10	2
118	Mobile Crane Safety (Wheeled)	10/1/10	2
119	Mobile Crane Safety (Wheeled)	10/1/10	2
120	Mobile Crane Safety (Wheeled)	10/1/10	2

Mobile Crane Technical Information Notes

Index of Technical Information Notes

Quote Ref: TIN 100

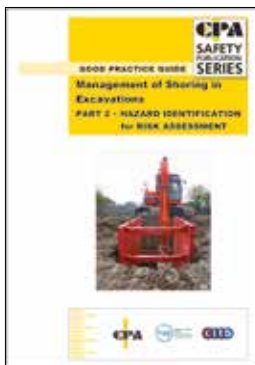
Shoring Technology Interest Group



Management of Shoring in Excavations Part 1 - Management

The guidance in this publication is intended to cover the vast majority of conventional and frequently encountered excavation schemes in the UK, together with the most commonly available shoring solutions for these schemes. Major, high risk or unusual shoring schemes will always require highly experienced shoring design specialists to be involved in their planning, design and management. It is recommended that for any high risk shoring a recognised specialist designer is engaged early in the planning process.

Quote Ref: STIG 1201



Management of Shoring in Excavations Part 2 - Hazard Identification for Risk Assessment

Risk management is a vital part of every construction project or task. This safety guidance document contains a generic list of possible hazards that may be present when planning and executing excavation and shoring related operations. The list is not site specific, nor does it attempt to be exhaustive.

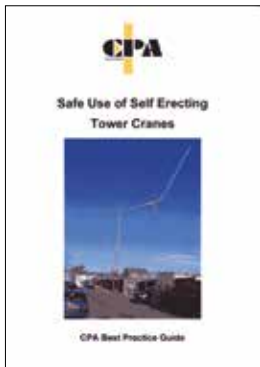
Quote Ref: STIG 1501



Management of Shoring in Excavations Part 3 - Selection of Proprietary Shoring Equipment

Part 3 of the management in shoring series provides expanded information on the most commonly available modular shoring systems in the UK to assist designers and contractors with the safe selection of suitable support systems prior to work commencing on site.

Quote Ref: STIG 1801



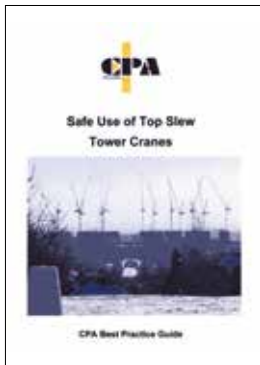
Safe Use of Self Erecting Tower Cranes

The management of the installation and use of Self Erecting Tower Cranes (SETCs) follows the same principles as other tower cranes.

The purpose of this Guide is to provide guidance on the safe siting, erection, use, maintenance, thorough examination and dismantling of SETCs, together with the management and planning of these activities.

Also applies to truck mounted tower cranes

Quote Ref: TCIG 0601



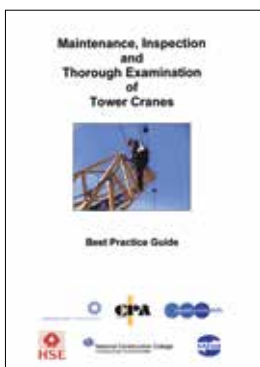
Safe Use of Top Slew Tower Cranes

This guide covers the whole of the lifting operation from the tower crane user's perspective.

It sets out to provide guidance in an easily assimilated form, paying particular attention to the duties of the whole lifting team, the hazards involved in tower crane operation and precautions to be taken if accidents are to be avoided.

Quote Ref: TCIG 0701

Note: being updated for 2024. Refer to www.cpa.uk.net/tower-crane-interest-group-tcig-publications for the latest version.



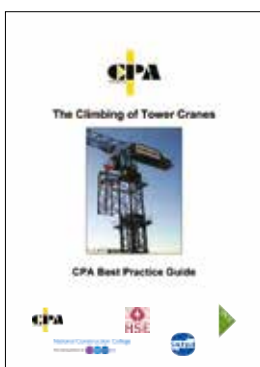
Maintenance, Inspection and Thorough Examination of Tower Cranes

The purpose of this Guide is to set out, in clear and concise terms, Best Practice for meeting legal requirements.

The document is in two sections - Maintenance, and Thorough Examination, to emphasise that these are separate activities.

It is aimed at tower crane owners, and those managing and carrying out the maintenance and thorough examination. However, the document will also be of benefit to other groups such as tower crane users.

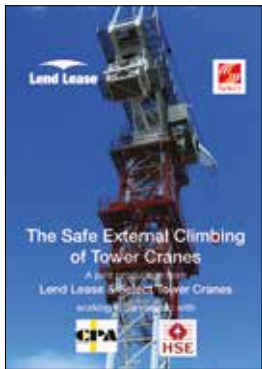
Quote Ref: TCIG 0801



Climbing of Tower Cranes

The climbing of tower cranes is a specialist technique used in the installation of tower cranes to increase or decrease the height of a crane without the use of a large mobile crane to lift components to the top of the crane. Successful tower crane climbing operations depend on detailed planning and effective teamwork by suitably trained and experienced personnel.

Quote Ref: CPA TCIG 1101

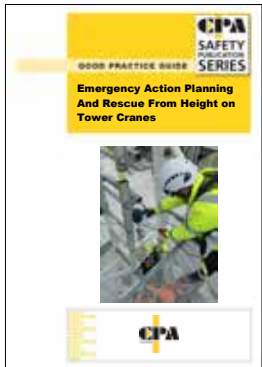


Tower Crane Climbing Safety (Film)

This is an educational film that tackles the safer climbing of tower cranes and raises the awareness of safe practices which can avoid potential risks at all stages of tower crane climbing and aims at driving improvements across the industry to rule out incidents.

The film offers step-by-step practical advice through all stages of tower crane climbing, from planning stages through to onsite activities, including identification of the planning required before work and on site, on the day and compliments the Climbing of Tower Cranes publication - TCIG 1101.

The film has been uploaded to the Youtube website and can be viewed through the following link:
www.cpa.uk.net/tower-crane-interest-group-tcig-publications



Safe Use Guidance on Emergency Action Planning and Rescue From Height on Tower Cranes

Guidance for emergency action planning and rescue from height on tower cranes was first introduced as a TIN (013) a number of years ago, with its primary purpose being to indicate what emergency actions should take place for the rescue of persons from height on tower cranes so that wherever tower cranes are erected, the emergency response and rescue of persons from height should be planned for. Due to the extent and depth of the revised content, it has been converted into a full-sized safe use publication.

Quote Ref: TCIG 2101

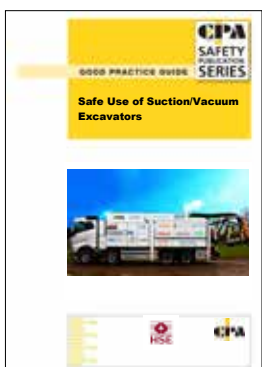


Tower Crane Technical Information Notes

Index of Technical Information Notes.

Quote Ref: TCIG TIN 000

Suction and Vacuum Excavator Interest Group



Safe Use of Suction/Vacuum Excavators

This Good Practice Guide for the Safe Use of Suction/Vacuum Excavators aims to educate owners, operators, hirers, contractors, clients, trainers and maintenance staff on the nature, operational practices and safe working requirements of these types, and emphasises the wide-ranging operational aspects of these machines. The publication further provides specific recommendations around lone working, the use of a second operator and other supporting staff, and information relating to contaminated ground containing radioactive wastes. Other additions to the guidance include clean-up procedures that should be followed when hazardous materials – particularly asbestos-based materials - are drawn into a machine.

Note: being updated for 2024

Quote Ref: SAVESIG GPG1



Reducing Unintended Movement of Plant

This guidance establishes where and how inadvertent or operation of a control such as a switch, lever, pedal etc. has caused unintended machine movement resulting in, in a number of cases, serious injuries and fatalities. It describes to users of plant the consequential risks of inadvertent operation and what control measures should be taken to mitigate those risks. The document incorporates a number of case studies on real life incidents, and provides an analysis on the causes, consequences and outcomes of each. This will highlight to readers how incidents have occurred and how they could have been prevented.

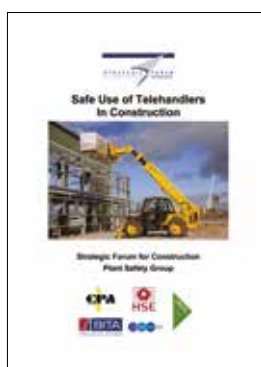
Further guidance is provided for the correct selection of plant, and the selection and fitting of additional control measures. The guidance encompasses all plant types including those operated through a remote-control unit, except MEWPs where a separate publication from the Plant Safety Group on crushing issues has already been produced.



Safe Use of Quick Hitches on Excavators

This guidance has been prepared by the Plant Safety Group to provide clarity about the Safe Use of Quick Hitches including planning, equipment selection, training of personnel, and provision of information, familiarisation, safe use, maintenance, inspection and thorough examination, together with monitoring of the whole process. The guidance is straightforward, comprehensive and easy to adopt. It represents best practice.

Quote Ref: CPA 1001



Safe Use of Telehandlers in Construction

This document is intended to provide best practice guidance on the management and supervision of the use of telehandlers on construction sites including planning, equipment selection, selection and training of personnel, provision of information, familiarisation, safe use, maintenance, inspection and thorough examination, together with monitoring of the whole process. It is essential that in managing the use of telehandlers, adequate attention is paid to all aspects of the process - selection of the correct equipment for the application, planning its use by a competent person, monitoring the activity and rectification of issues; if any one aspect is ignored the probability of an incident will increase significantly, putting both the machine operator and people in the vicinity at risk.

Quote Ref: CPA 1101



Safe Use of Dumpers

This publication was produced by the Plant Safety Group following a number of serious injuries and death occurring to operators operating forward tipping dumpers or those near to a moving dumper.

The safe use guidance is designed to help those involved with planning and carrying out dumper activities achieve a better awareness of the particular risks involved and the measures that can be put in place to mitigate those risks and is aimed at forward tipping types as they are commonly used on most construction sites to predominately transport earths and materials.

The guidance is aimed at clients, contractors, users, owners, operators, manufacturers, training bodies and those that maintain forward tipping dumpers.



Telehandler Suspended Loads

This publication extracts vital information from the Safe Use of Telehandler in Construction publication in a four-page stand-alone document. It highlights the dangers of lifting and travelling with suspended loads using a telehandler and lays out the key requirements that need to be met when planning and executing suspended loads lifting activities with these machine types.



Medical Fitness to Operate Construction Plant

Persons who operate construction plant need to be physically and mentally capable of controlling and operating the plant in a safe and efficient manner. Employers have a duty to ensure that their employees who operate plant have the required level of fitness.

This document provides guidance to employers on how to carry out these duties. It contains guidance on indicative levels of fitness, choosing an occupational health service provider, and managing issues around fitness for task.

Quote Ref: CPA 1301

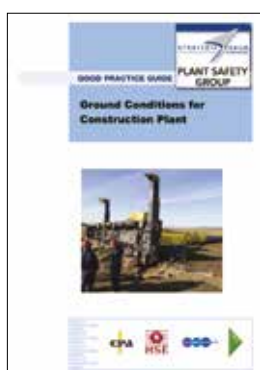


Competence to Operate Construction Plant

The duty to ensure that plant operators are competent rests with their employer. This duty can involve training, development of experience, assessment, mentoring and continuous development.

This document is intended to provide best practice guidance on the management of the competence of plant operators, clarifying methods for employers to manage, develop and record employees 'competences; and enabling them to meet their duties under both PUWER and CDM.

Quote Ref: CPA 1401



Ground Conditions for Construction Plant

Mobile and movable construction plant needs adequate ground conditions to ensure that it remains stable during setup, operation and movement. The risk of collapse or unplanned movement due to failure of the ground or supporting structure must be assessed and minimised. This requires cooperation between contractors, specialists and plant companies.

This guidance document draws industry best practice together, and sets out guidelines for management of the process including cooperation, technical assessment, planning, and precautionary measures.

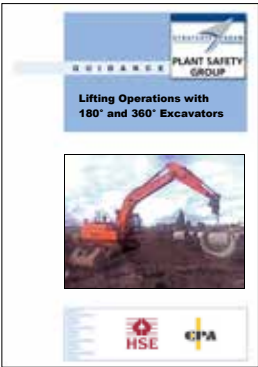
Quote Ref: CPA 1402

Ground Conditions for Construction Plant – A Brief Guide



This is a short form version of the Ground Conditions guidance and contains the key points concerning ground conditions, intended for use by drivers, operators and others who do not require the full depth of detail that is in the main guidance document.

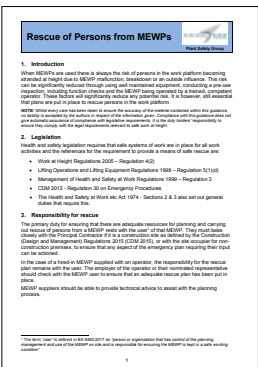
Lifting Operations With Excavators



This good practice guide was updated from the 2007 version due to the prolific use of excavators used for lifting operations. The guidance thoroughly sets out the precautions and procedures that should be taken into account when planning and carrying out lifting operations with 360-degree tracked and wheeled excavators as well as 180-degree excavators/backhoe loaders. A core message is that excavators are primarily designed for excavating and handling loose material rather than lifting suspended loads and introduces a number of additional risks when carrying out lifting operations. Therefore, an excavator should not be the first or only choice for lifting.

Quote Ref: CIG 0801

Rescue of Persons from MEWPs



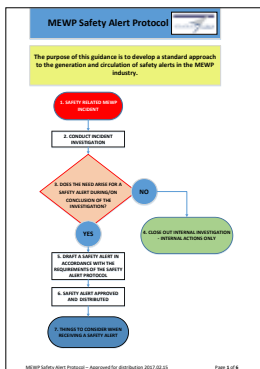
When MEWPs are used there is always an inherent risk of people becoming stranded at height due to a machine malfunctioning, breaking down or other influences. Although measures can be put into place to reduce the risk, it is still important that organisations have plans in place should a rescue from a MEWP ever become necessary.

This primary duty for rescue gives guidance to the organisation that has control of the planning, management and use of the MEWP on-site. Presented in easily digestible sections, it covers factors such as the Health and Safety legislative requirements, responsibility for rescue, means of rescue, the use of the Emergency Services and discusses scenarios such as rescues using another MEWP.

Managing the Safe Condition of MEWPs



This safety guidance produced in conjunction with the CPA and IPAF outlines the importance of keeping all MEWPs in safe working condition throughout their working life to ensure continued safe and efficient operation. It identifies three key elements - Inspection, Maintenance and Thorough Examination - and details why each of these elements should be given equal emphasis to ensure optimum safety when operating MEWPs.



MEWP Safety Alert Protocol

A Safety Alert Protocol has been developed by the Plant Safety Group MEWPs Group including members from CPA and IPAF. The Protocol describes a voluntary standard for Safety Alerts issued by contractors and others who have incidents they believe may be related to the design, manufacture, maintenance or use of MEWPs. It is intended to guide the author of a Safety Alert so that the alert is seen as authoritative and helpful for those that receive it. A standard format is included for the layout and content of Safety Alerts.



Reducing Trapping/Crushing Injuries to People in MEWPs

This guidance is intended to help to reduce risks of trapping and crushing injuries to people working in platforms and has been produced in two parts. Part 1 is aimed at planners, managers, and trainers and provides information on hazards, risk assessment, controls and responsibilities. Part 2 is aimed at those using and supervising MEWPs, as well as for training bodies, and responsible for rescuing anyone trapped on a MEWP platform and also designed to be used in briefings or toolbox talks for supervisors and MEWP operators.



Safe Use of Dumpers Supplement Rotating Seat Dumpers Protocol

A number of manufacturers are now supplying a variant of forward tipping dumper but where the operator's seating position can be rotated through 180 degrees, allowing the operator to travel the machine either facing the skip or with the skip behind them.

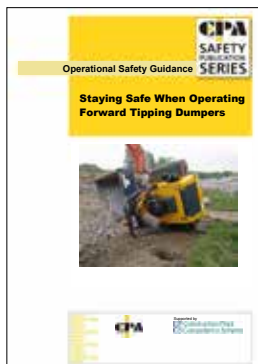
To provide industry and users with clear guidance as to which position the operator should be when carrying out dumper activities using rotating seat types, the Construction Industry's Plant Safety Group has produced an operational protocol.



Work at Height whilst Loading and Unloading Transport

Work at Height during the loading and unloading of transport vehicles in the construction plant industry presents a series of challenges in addition to those experienced by general transport industry. In particular, a significant amount of loading and unloading will take place on construction sites where it is often more difficult to the purpose made gantries and loading docks that are commonplace in the retail and commercial distribution sectors. However, wherever work at height is required during the loading and unloading of any transport vehicle it should be carried out by trained personnel, following careful planning which includes adequate assessment of the risks. This document provides guidance on the issue involved.

Quote Ref: CPA 0902

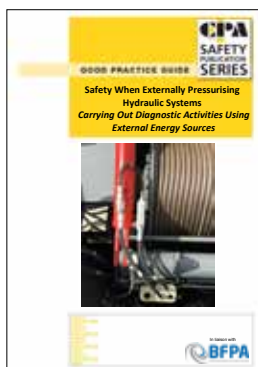


Staying Safe When Operating Forward Tipping Dumpers

Originally published as a result of a series of serious incidents and fatalities involving Forward Tipping Dumpers, this operational safety guidance is aimed principally at operators for refresher training purposes and now supports the main safe use of dumpers publication.

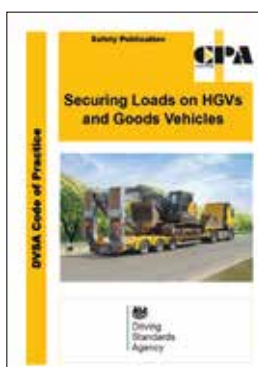
It has been divided into three sections: a 'stay safe by' list of actions for operators; the supporting underpinning knowledge providing the 'how's and why's' of each action - designed to provide assistance for tool box talks and one-to-one familiarisation activities; a section for managers and supervisors in terms of planning and supervision requirements.

The publication includes a case study to aid learning, based on an observed event, outlines the causes and consequences of the activity and how it can be prevented.



Hydraulic Pressurising Activities

Produced in liaison with the British Fluid Power Association (BFPA), this good practice guide focusses on the safety aspects of pressurising hydraulic systems using an external energy source for diagnostic purposes, undertaken either in-situ i.e. in its normal place on the machine, or removed from the machine and pressurised externally. The publication has been written for the plant maintenance sector and aimed at those carrying out the activity as well as those managing the process. Due to the high risks involved, a key message of the publication is that employers should, as a first step, consider utilising organisations that specialise in hydraulic pressure testing who will have the correct equipment and appropriate knowledge to safely conduct the activity.



DfT CoP Securing Loads on HGVs and Goods Vehicles

The Department for Transport have produced a Code of Practice for the securing of loads on HGVs and goods vehicles. Being web-based only, CPA have extracted directly unchanged the content from the DVSA website which provides guidance on how to comply with the law and transport, load and unload vehicles safely. It has been devised as a publication to allow easier extraction of key and relevant information.

CPA STARS OF THE FUTURE



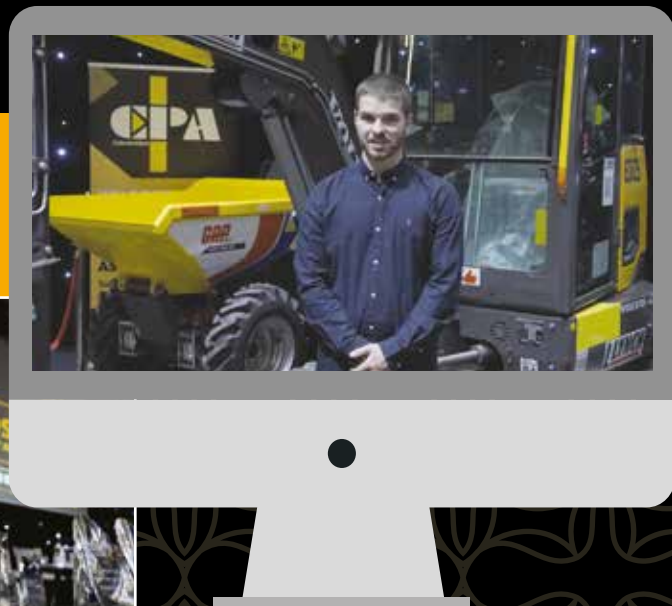
GIVE YOUR APPRENTICES AND TRAINEES THE RECOGNITION THEY DESERVE

Stars of the Future is the CPA's awards scheme for apprentices and trainees in the construction plant sector.

Set up by the CPA over 10 years ago, the awards are intended to recognise and reward outstanding apprentices and trainees who not only bring ability and commitment to their learning and their work, but also possess those extra capabilities and attitudes which mark them out as being not only the foundations of the future of the industry, but also potentially its future leaders – the Stars of the Future.

- ★ Awards scheme run on an annual basis
- ★ Nomination forms are available on the CPA website in January
- ★ Awards across multiple job roles including Plant Mechanics, Hire Controllers, Plant Operatives and many more
- ★ National recognition and fantastic prizes available, including overseas trips
- ★ Prestigious awards event held mid-year

See www.cpa.uk.net/skills-training/stars-of-the-future for further details

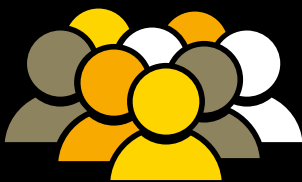




WHY JOIN THE CPA?

Established for over 80 years, the Construction Plant-hire Association (CPA) has circa 1,900 members.

- Exclusive use of the CPA Model Conditions
- Receive extensive support relating to health and safety, legal matters and more to help your business
- Support with training and skills
- Get specialist advice on the latest issues affecting the plant-hire sector



THE CPA HAS CIRCA
1,900
MEMBERS



CPA MEMBERS SUPPLY
OVER 85%
OF HIRED PLANT TO
THE CONSTRUCTION
INDUSTRY



THE UK PLANT-HIRE
INDUSTRY IS WORTH
OVER £5 BILLION
TO THE UK ECONOMY

Contact the CPA team

Tel: 020 7796 3366

E-mail: enquiries@cpa.uk.net

Web: www.cpa.uk.net

Connect with us



New documents are being produced on a regular basis, please check the CPA website: www.cpa.uk.net for updates.





Construction Plant-hire Association

27/28 Newbury Street
 Barbican
 London
 EC1A 7HU

Tel: 020 7796 3366
 Fax: 020 7796 3399

Email: enquiries@cpa.uk.net

www.cpa.uk.net

April 2024